

## Local Groups Supported by the Walk

25% of the funds raised by the CROP Hunger Walk go to local hunger relief and prevention agencies through a grant application process. These agencies will receive funds raised by the 2012 CROP Hunger Walk to help alleviate and prevent hunger in Washtenaw County (*please visit [icpj.net/crop](http://icpj.net/crop) for a description of each agency*):

AID in Milan 2%  
Avalon 1%  
Catholic Social Services 2%  
Community Action Network 3%  
Emmanuel House 1%  
Full Circle 1%  
Growing Hope 1%  
Hope Clinic 3%  
LOVE Thy Neighbor 1%  
Muslim Social Services/Backdoor Pantry 2%  
Northfield Human Services 1%  
Packard Health 3%  
SOS Community Services 2%  
Breakfast program at St Andrews 2%

The more  
you raise,  
the more  
they receive!



### Please donate!

#### CROP Non-Perishable Food Collection

Walkers are invited to bring gifts of **non-perishable food** on the day of the Walk. This year's food offering will go to LOVE Thy Neighbor, Northfield Human Services, and Brown AME Chapel. Please help by bringing food with you on Walk Day (a great way for kids to contribute too!)



*Interfaith Council  
for Peace & Justice*



*ICPJ Hosts the 38th Annual  
Washtenaw/Ann Arbor  
CROP Hunger Walk*

**ENDING  
HUNGER  
ONE STEP  
AT A TIME**



**Sunday, October 14th, 2012**

**Bethlehem United Church of Christ  
(423 S. Fourth Ave, Ann Arbor)  
1pm Registration; 2pm WALK  
3-5pm Community Meal**

Register today with your Recruiter  
or online at [www.icpj.net](http://www.icpj.net)!

## Local Groups Supported by the Walk

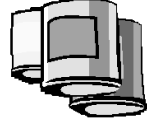
25% of the funds raised by the CROP Hunger Walk go to local hunger relief and prevention agencies through a grant application process. These agencies will receive funds raised by the 2011 CROP Hunger Walk to help alleviate and prevent hunger in Washatenaw County (please visit [icpj.net/crop](http://icpj.net/crop) for a description of each agency):

- Aid in Milan (2%)
- Avalon Housing (2%)
- Catholic Social Services (2%)
- Community Action Network (2%)
- Emmanuel House (1/2 canned goods)
- Growing Hope (2%)
- Hope Clinic (2%)
- Interfaith Hospitality Network (Alpha House) (2%)
- Love Thy Neighbor (1%)
- Muslim Social Services (2%)
- Northfield Human Services (1/2 canned goods)
- Packard Health (2%)
- Peace Neighborhood Center (2%)
- SOS Community Crisis Center (2%)
- St. Andrew's Breakfast Program (2%)

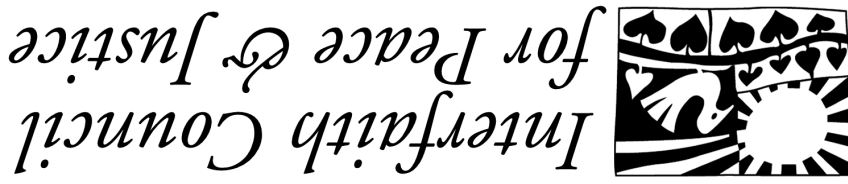
The more  
you raise,  
the more  
they receive!



### Please donate! CROP Non-Perishable Food Collection



Walkers are invited to bring gifts of non-perishable food on the day of the Walk. This year's food offering will go to Emmanuel House and Northfield Human Services. Please help by bringing food with you on Walk Day (a great way for kids to contribute too!).



*Interfaith Council  
for Peace & Justice*

*ICPJ Hosts the 37th Annual  
Washatenaw/Ann Arbor  
CROP Hunger Walk*



**Sunday, October 2nd, 2011**

**Bethlehem United Church of Christ  
(423 S. Fourth Ave, Ann Arbor)  
1pm Registration; 2pm WALK  
3-5pm Community Meal**

Register today with your Recruiter  
or online at [www.icpj.net](http://www.icpj.net)

